



COMPANY PROFILE



Info@egycamp.com



www.egycamp.com



+20 2 2447 3121 / 2

EGYCAMP Was Founded in 2006

But today, we are group of companies



EgyCamp

Mobile Houses &
Steel Fabrication



IPS

Major Supplier for
oil & Gas clients



APETCO

Oil & Gas Services
in Egypt & Libya



C4C

Catering Services



DIS

Metal Removal &
Cutting Tools

EgyCamp is Designing and Producing:

- Steel Portable Caravans.
- Mud Solutions.
- Offshore Cargo Carrying Units.
- Steel Structure.
- Oilfield Tanks.
- Piping Works.



Working onsite, offsite,
onshore, and offshore.

About Us

We are tailoring the required products for major projects in the Oil & Gas field, construction sector, power stations, sewage plants, ...etc.

Working with Different Industries.



Completed over...

2000 Projects

Helping more than
70 Clients

Around
10 Countries

Over the years, our mobile units and camps have built a solid track record with many of the biggest names in the industry, both in Egypt and the Middle East, making them the leader in their class.



Our Camps are Ready for Living

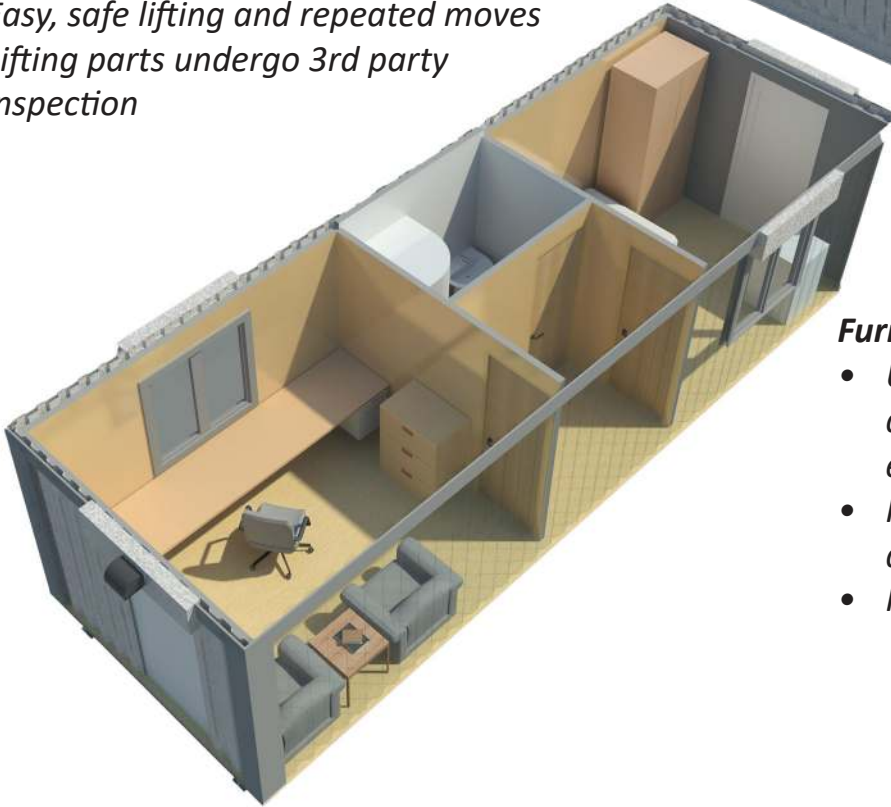
RWE Camp - North Delta , Egypt



Steel Caravans

Structure:

- Fully welded steel structure
- Expected life of at least 20 years
- Easy, safe lifting and repeated moves
- Lifting parts undergo 3rd party inspection

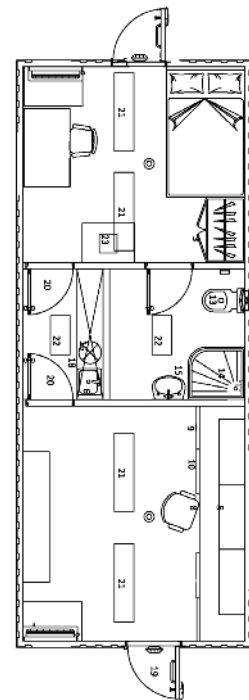


Furniture:

- Units delivered with high quality furniture and equipment
- High quality thermal and dust insulation
- Fitted with split type AC units

Egycamp's steel Caravans are designed and built to deliver the maximum durability and toughness for your operation, at the same time affording your staff many of the comforts of home.

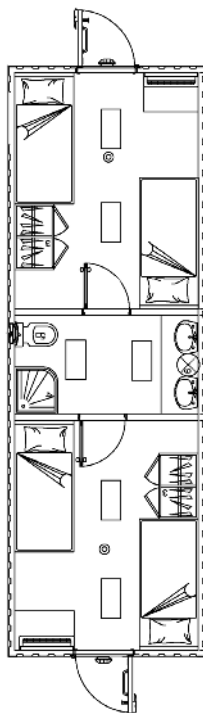
Egycamp's units are extremely versatile, allowing for easy and safe lifting as well as stacking of units above one another to conserve space. The units can also be connected to create bigger public spaces such as mess and rest halls, mosques, conference halls, etc.



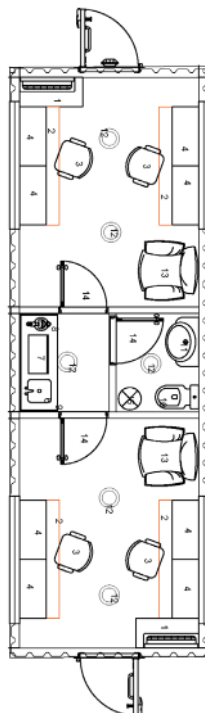
VIP Caravan



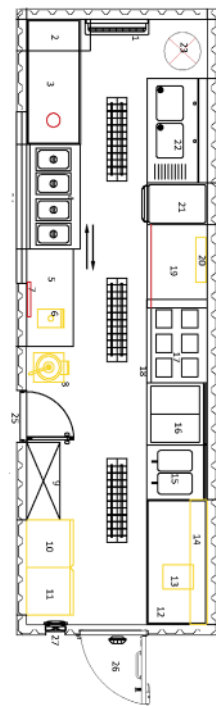
Our customers are offered a broad choice of catalog designs and we also provide the option to order custom designs featuring layouts, equipment, furniture and the look and feel of their choice.



4 Man Caravan



Offices Caravan



Kitchen Caravan

Offices

Features:

- Office designs are customizable to the client's requirements.
- Our furniture is made of solid wood and plywood laminated with natural veneer.

Equipment:

- ACs
- Desks
- Drawers
- File cabinets
- Swivel and fixed chairs



Accommodation

Features:

- Various layouts offering accommodation 1- 4 Persons per room
- Our units feature their own shared or private bathrooms
- Our furniture is made of solid birch, plywood laminated with natural veneer.

Equipment:

- ACs
- Writing Desks
- Single or bunk beds
- Storage Cupboards



Recreation

Features:

- Our recreational space offers the right environment for staff to relax after a hard day's work.
- Our units can be designed and fitted to the client's exact needs.
- Features include large LCD TVs and satellite receivers
- Units can also be equipped as gyms or billiard rooms.



Clinic

Features:

- Our clinic units provide space for needed medical care and first aid.

Equipment:

- Examination beds
- Examination chair
- Medicine cabinets
- UV light
- Sanitation unit



Mosque

Features:

- Our mosque can be composed from a single unit (3x9m) or by combining 3 units for a 9x9m space.

Equipment:

- Complete sound system with audio amplifier
- Book cabinets
- External minaret and dome can be fitted.
- Sanitation unit



Kitchen

Features:

- Fully equipped kitchens serving up to 120 persons, customizable by client
- Walls and ceilings fully lined with stainless steel for easy cleaning
- Floors coated with durable epoxy mortar
- All appliances are supplied by top brands e.g. MBM from Italy
- Fully integrated fire-fighting system
- Easily Adaptable to function adjacent to mess halls for easy access



Equipment:

- Hot plate + oven + Grill
- Meat Mincer
- Deep fryer
- Exhaust hood
- Refrigerator
- Bain Marie
- Dish-washer
- Sliding wheel
- Potato peeler
- Water Heater
- Food preparation table
- Stainless steel sinks
- Stainless steel shelving
- Fire fighting system



Mess Hall

Features:

- The spacious and comfortable mess hall provides space for eating and socializing
- Furnished with high quality furniture made of solid birch, plywood laminated with natural veneer offering both comfort and durability.

Equipment:

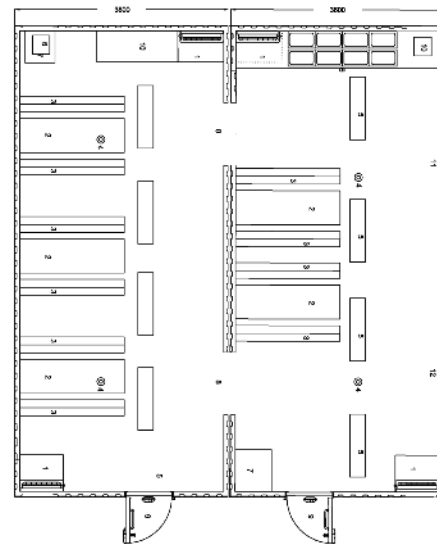
- ACs
- Tables and chairs
- Serving tables
- Salad bars



Catring Combination

Features:

- Our units can be easily combined to provide a large 9x9m space housing a kitchen and 2 mess halls making both food preparation and service easily accessible.
- This allows up to 120 staff members to be served around the clock.



Bakery

Features:

- Fully equipped bakery serving up to 120 persons, customizable by client
- All appliances are supplied by top brands e.g. MBM from Italy

Equipment:

- Ovens
- Mixers
- Stain steel shelves
- Stain steel sinks
- Preparation table
- Water heater



Fridge/Freezer

Features:

- Our versatile cold stores can be designed as freezers or separate compartments housing freezer and refrigerator.
- All walls, floors, ceilings and doors are insulated with 100mm polyurethane panels.
- 2 Copeland 5hp units (one stand-by unit) deliver the most reliable cooling and lowest running cost.
- Internal door between freezer and fridge is equipped with a heater preventing accumulation of ice.



Laundry

Features:

- *Laundry units are equipped to handle the needs of up to 120 employees.*
- *We equip all units with equipment from some of the world's top brands in industrial washing machines, dryers and irons.*
- *Interiors are water-resistant and floors are coated with epoxy.*

Equipment:

- *Washing machines - Dryers*
- *Irons - Water Heaters*
- *Shelving*



General Bathroom

Features:

- *Our bathrooms are designed for reliability*
- *Interiors feature Formica walls and epoxy floors for easy cleaning and water-resistance*
- *We install the highest quality in ceramic ware and fittings e.g. Ideal Standard*
- *All piping is made of polypropylene and fitted externally for easy maintenance.*
- *Sinks are available in fiber glass, ceramic or stainless steel*



Mud Systems

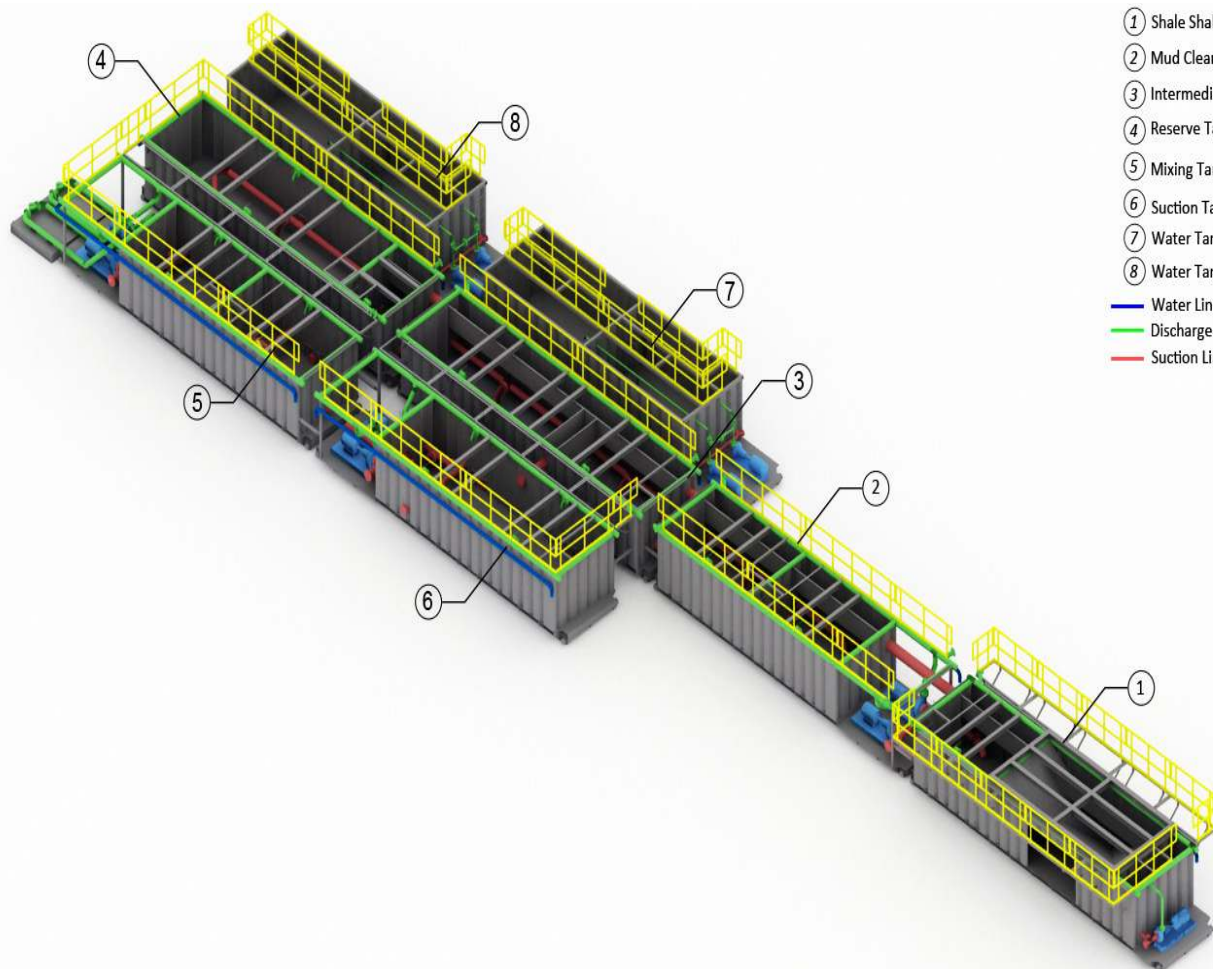
*We have a very strong record in fabrication of mud systems.
We have the capability to design and build complete mud plants of various capacities.
Our system could be skid or trailer mounted.
We have our own designed systems ECMC2500 - ECMC1500.*



Features:

- Tanks
- Piping, fittings, Unions
- Solid control equipment
- Grating, stairs and ladders
- Ex-proof electrical and lighting systems





Frac Tank

Features:

- *Single or double axle*
- *Fully equipped with hydraulic and braking system*
- *Equipped with pumps*



Diesel Tank

Features:

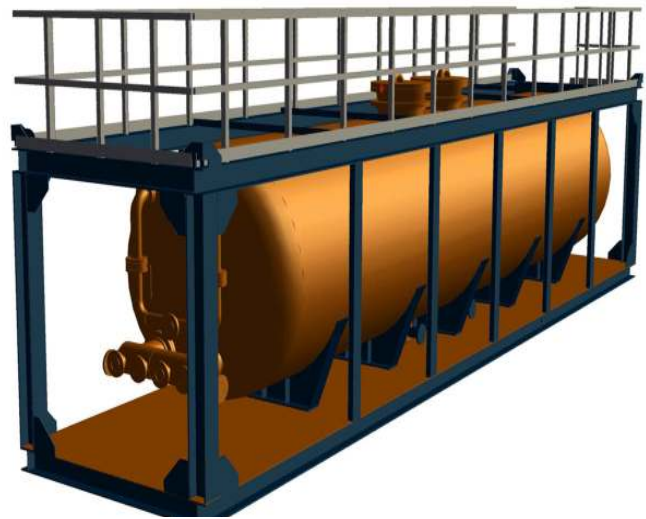
- *Industrial and domestic application*
- *Rectangular or cylindrical*
- *With Pumps*
- *Pumps and electricals are ex-proof*



Acid Tank

Features:

- Industrial and domestic application
- Capability to build off-shore tanks
- BS12079 certified frame
- ASMI certified vessel
- Acid resistant internal lining



Crude Oil Tank

Features:

- Single or double axle
- Fully equipped with hydraulic and braking system
- Equipped with pumps



Water Tanks

Features:

- Industrial and domestic application
- Rectangular or cylindrical
- With Pumps
- With water filtration system



Well Testing

Features:

- Full system on truck
- 3 phase separator
- Choke manifold
- Oil laboratory
- Electric generator
- Air compressor
- Surge Tank (2nd truck)
- Data acquisition system



Chemical Injection

Features:

- Skid mounted
- Injection pumps

Various uses:

- Corrosion inhibitor
- Demulsifier
- Anti Foam
- Pure point depressant
- Anti scale
- Anti sludge



Batch Mixer

Features:

- Tanks with mixers
- Agitators
- Pumps





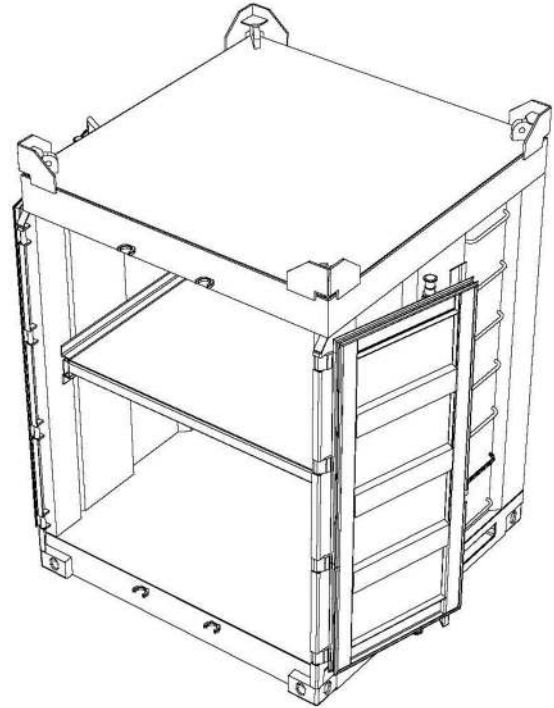
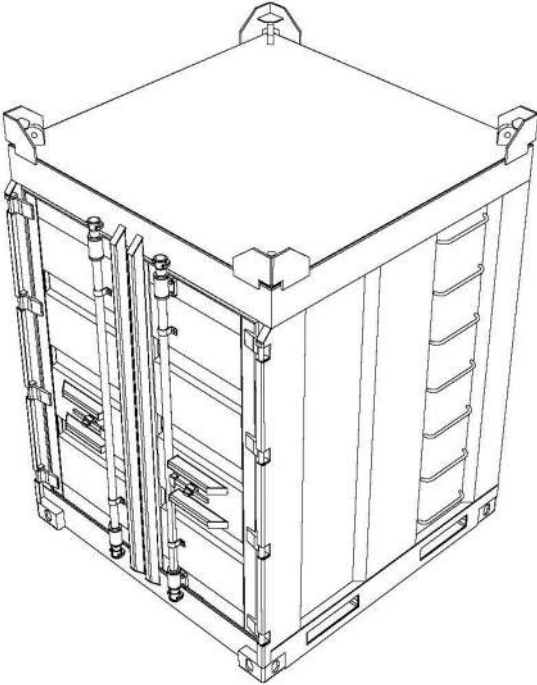
Features:

- *Pressurized Zone 1 Cabins .*
- *Ergonomic Cabin Design.*
- *2 AC Units for Optimal Climate.*
- *Quality built interior.*
- *Superior insulation.*
- *Private workspace for geologist.*



Cargo Carrying Units (CCUs)

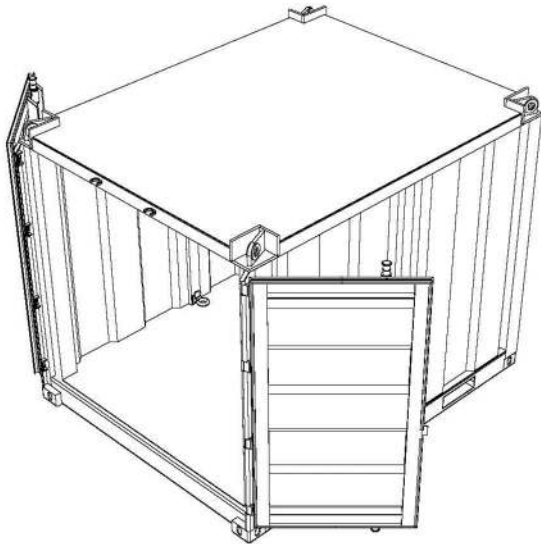
DNV 2.7-1/BS 12079 Mini Container



Product code: CP-01

Overview	Offshore mini containers are suitable for transporting chemicals, big bags, barrels and other goods to & from offshore oil rigs.			
Features	<ul style="list-style-type: none"> <input type="checkbox"/> DNV 2.7-1/BS 12079 certified appraised design by Bureau Veritas <input type="checkbox"/> Various sizes (standard, tall and extra tall) <input type="checkbox"/> Stackable design <input type="checkbox"/> Protected padeye <input type="checkbox"/> Internal and external Tie points 	<ul style="list-style-type: none"> <input type="checkbox"/> Certified ISO bottom corner <input type="checkbox"/> Side ladder <input type="checkbox"/> Protected hinges and locks <input type="checkbox"/> Sealed water proof door <input type="checkbox"/> Pin secured middle shelf <input type="checkbox"/> Drain hole <input type="checkbox"/> Safety net (Optional) <input type="checkbox"/> Lifting Set (Optional) 		
Weight and Dimensions	Max. Gross weight (kg)	6,600	External Dimensions	1830 x 1830 x 2400
	Tare Weight (kg)	1,600	L x W x H (mm)	
	Max. Pay Load (kg)	5,000	Internal Dimensions	1680 x 1680 x 2000
			L x W x H (mm)	

DNV 2.7-1/BS 12079 10ft Closed Top Container



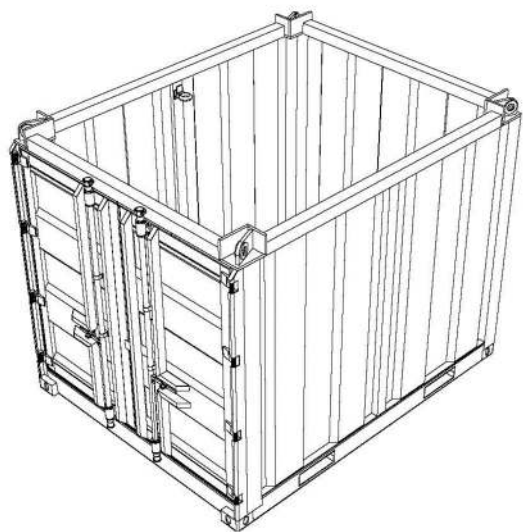
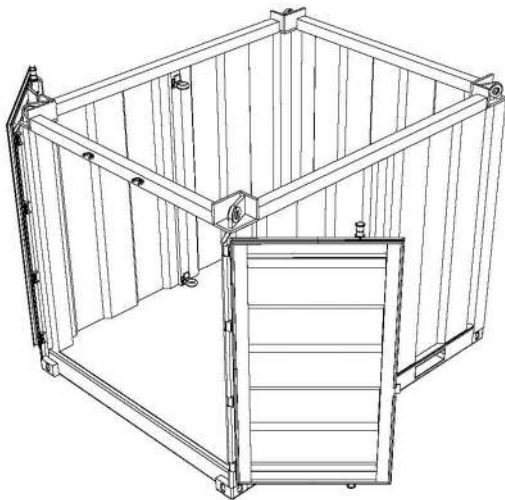
Product code: CP-02

Overview	Offshore Closed top containers are suitable for transporting tools, hoses and goods to & from offshore oil rigs.			
Features	<input type="checkbox"/> DNV 2.7-1/BS 12079 certified appraised design by Bureau Veritas <input type="checkbox"/> Stackable design <input type="checkbox"/> Protected padeye <input type="checkbox"/> Certified ISO bottom corner <input type="checkbox"/> Drain hole		<input type="checkbox"/> Side ladder <input type="checkbox"/> Protected hinges and locks <input type="checkbox"/> Sealed water proof door <input type="checkbox"/> Internal and external Tie points <input type="checkbox"/> Lifting Set (Optional)	
Weight and Dimensions	Max. Gross weight (kg)	10,500	External Dimensions L x W x H (mm)	3000 x 2400 x 2600
	Tare Weight (kg)	2,500	Internal Dimensions L x W x H (mm)	2800 x 2200 x 2300
	Max. Pay Load (kg)	8,000		



**BUREAU
VERITAS**

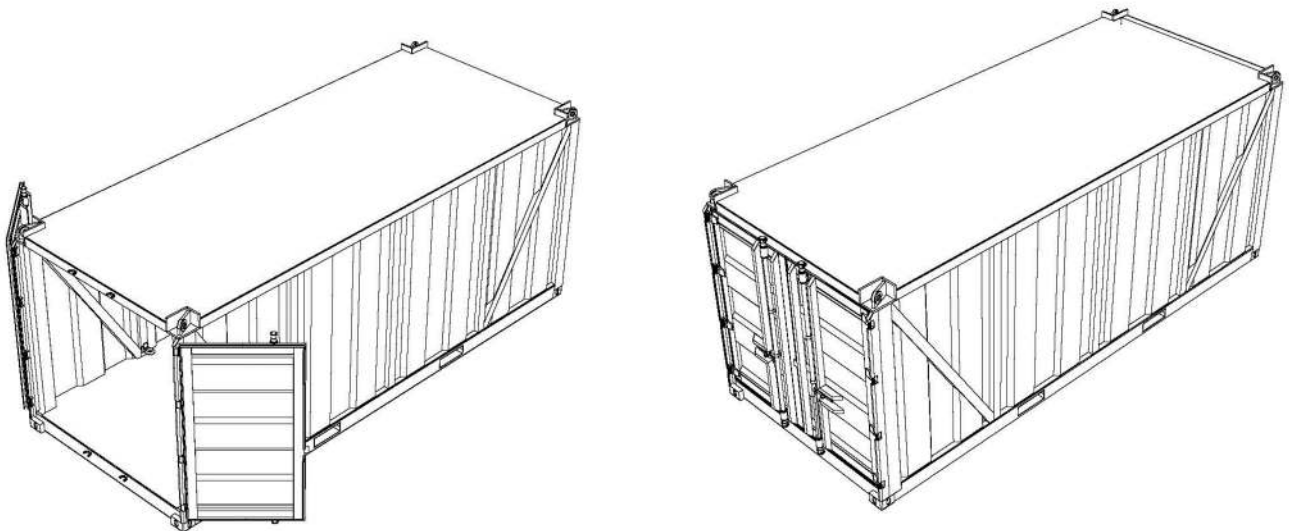
DNV 2.7-1/BS 12079 10ft Open Top Container



Product code: CP-03

Overview	Offshore Open top containers with easy crane access are suitable for transporting tools, hoses and goods to & from offshore oil rigs.			
Features	<input type="checkbox"/> DNV 2.7-1/BS 12079 certified appraised design by Bureau Veritas <input type="checkbox"/> Stackable design <input type="checkbox"/> Protected padeye <input type="checkbox"/> Certified ISO bottom corner <input type="checkbox"/> Drain hole	<input type="checkbox"/> Side ladder <input type="checkbox"/> Protected hinges and locks <input type="checkbox"/> Sealed water proof door <input type="checkbox"/> Internal and external Tie points <input type="checkbox"/> Lifting Set (Optional) <input type="checkbox"/> Cargo net (Optional)		
Weight and Dimensions	Max. Gross weight (kg)	10,200	External Dimensions L x W x H (mm)	3000 x 2400 x 2600
	Tare Weight (kg)	2,200	Internal Dimensions L x W x H (mm)	2800 x 2200 x 2300
	Max. Pay Load (kg)	8,000		

DNV 2.7-1/BS 12079 20ft Closed Top Container



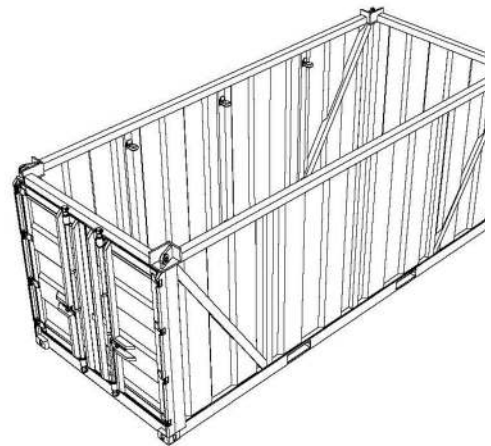
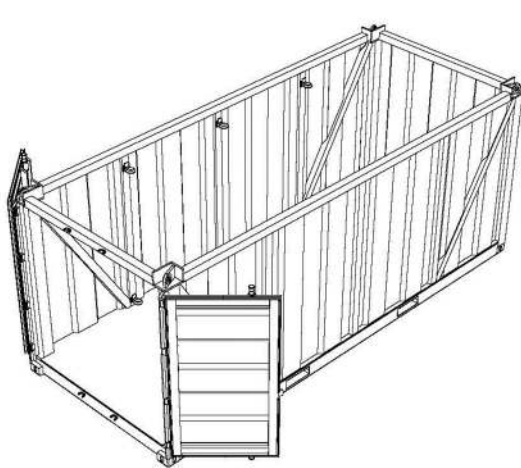
Product code: CP-04

Overview	Offshore Closed top containers are suitable for transporting tools, hoses and goods to & from offshore oil rigs.		
Features	<input type="checkbox"/> DNV 2.7-1/BS 12079 certified appraised design by Bureau Veritas <input type="checkbox"/> Stackable design <input type="checkbox"/> Protected padeye <input type="checkbox"/> Certified ISO bottom corner <input type="checkbox"/> Drain hole		<input type="checkbox"/> Side ladder <input type="checkbox"/> Protected hinges and locks <input type="checkbox"/> Sealed water proof door <input type="checkbox"/> Internal and external Tie points <input type="checkbox"/> Lifting Set (Optional)
Weight and Dimensions	Max. Gross weight (kg) Tare Weight (kg) Max. Pay Load (kg)	20,000 5,000 15,000	External Dimensions L x W x H (mm) 6000 x 2400 x 2600 Internal Dimensions L x W x H (mm) 5700 x 2100 x 2300



**BUREAU
VERITAS**

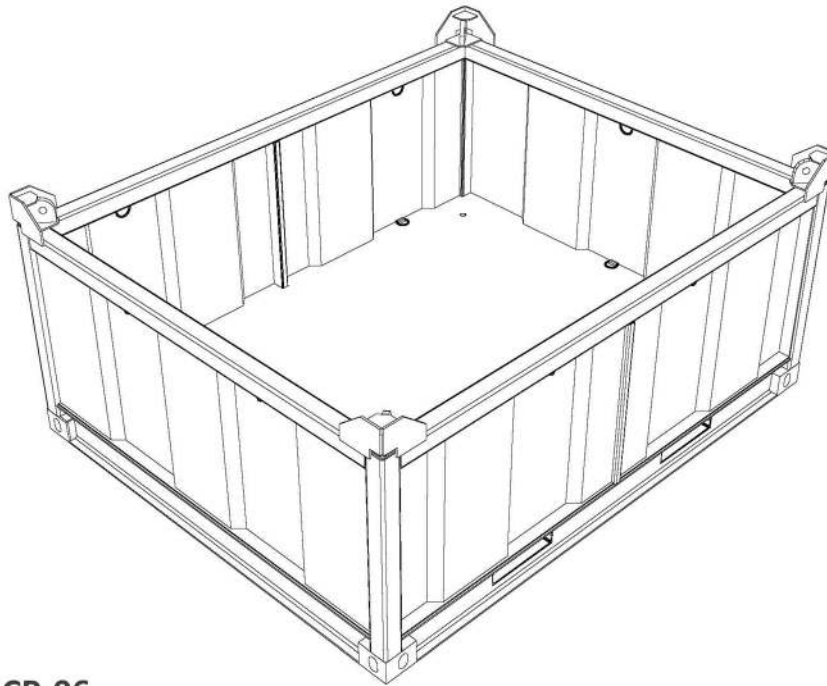
DNV 2.7-1/BS 12079 20ft Open Top Container



Product code: CP-05

Overview	Offshore Open top containers with easy crane access are suitable for transporting tools, hoses and goods to & from offshore oil rigs.			
Features	<input type="checkbox"/> DNV 2.7-1/BS 12079 certified appraised design by Bureau Veritas <input type="checkbox"/> Stackable design <input type="checkbox"/> Protected padeye <input type="checkbox"/> Certified ISO bottom corner <input type="checkbox"/> Drain hole		<input type="checkbox"/> Side ladder <input type="checkbox"/> Protected hinges and locks <input type="checkbox"/> Sealed water proof door <input type="checkbox"/> Internal and external Tie points <input type="checkbox"/> Lifting Set (Optional) <input type="checkbox"/> Cargo net (Optional)	
Weight and Dimensions	Max. Gross weight (kg)	19,500	External Dimensions	6000 x 2400 x 2600
	Tare Weight (kg)	4,500	L x W x H (mm)	
	Max. Pay Load (kg)	15,000	Internal Dimensions	5700 x 2100 x 2300
			L x W x H (mm)	

DNV 2.7-1/BS 12079 10ft Half Height Basket



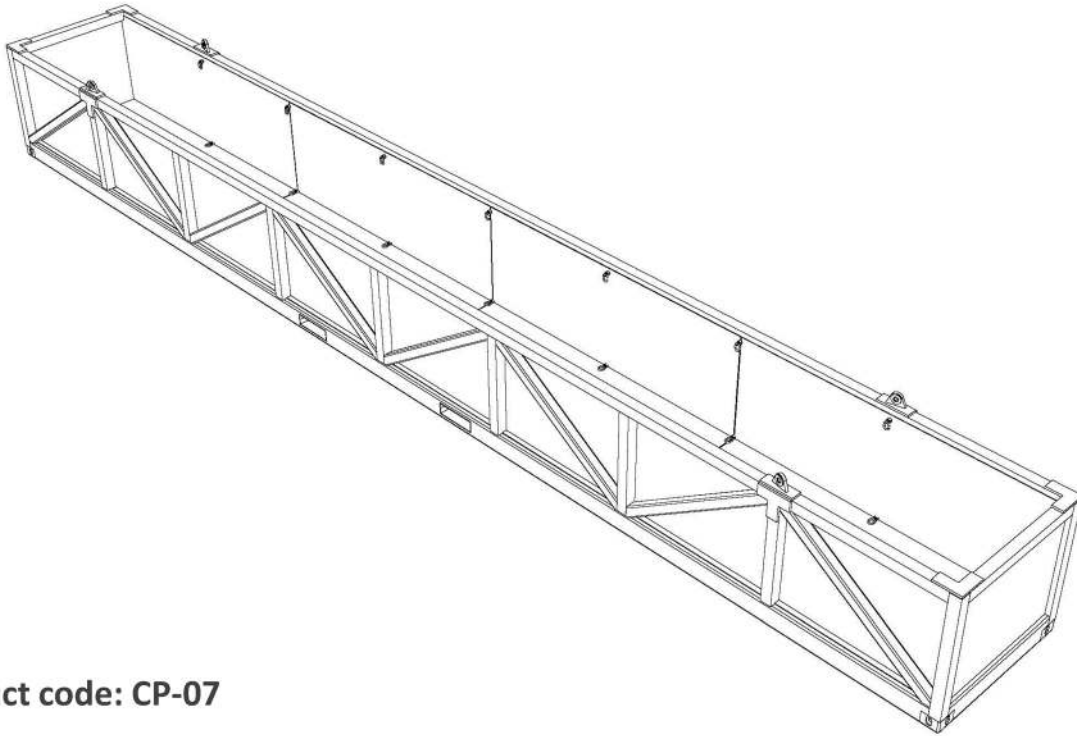
Product code: CP-06

Overview	Offshore baskets with easy crane access are suitable for transporting tools, hoses and goods to & from offshore oil rigs.		
Features	<input type="checkbox"/> DNV 2.7-1/BS 12079 certified appraised design by Bureau Veritas <input type="checkbox"/> Stackable design <input type="checkbox"/> Protected padeye <input type="checkbox"/> Certified ISO bottom corner <input type="checkbox"/> Drain hole		<input type="checkbox"/> Internal and external Tie points <input type="checkbox"/> Lifting Set (Optional) <input type="checkbox"/> Cargo net (Optional) <input type="checkbox"/> Fixed or removable top rail pin secured(Optional)
Weight and Dimensions	Max. Gross weight (kg) Tare Weight (kg) Max. Pay Load (kg)	6,750 1,750 5,000	External Dimensions L x W x H (mm) 3000 x 2400 x 1200 Internal Dimensions L x W x H (mm) 2800 x 2200 x 1000



**BUREAU
VERITAS**

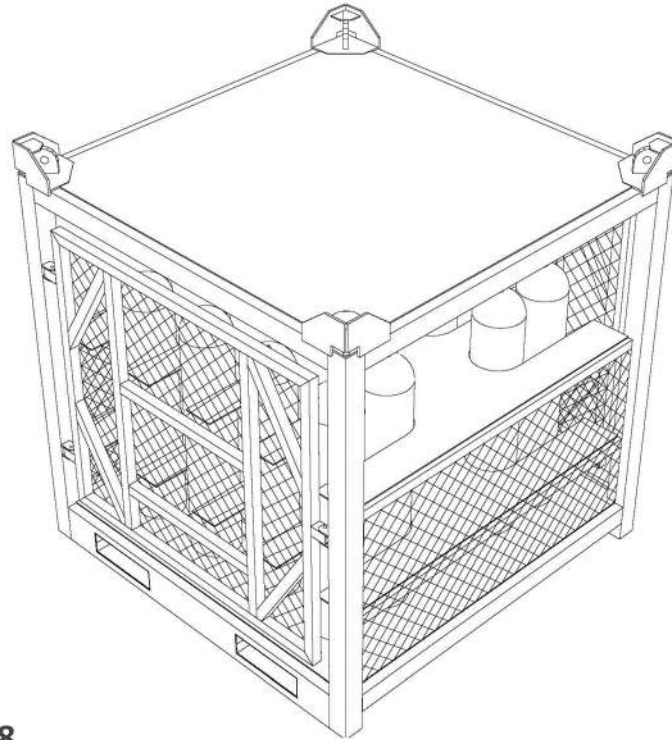
DNV 2.7-1/BS 12079 40ft Half Height Basket



Product code: CP-07

Overview	Offshore baskets with easy crane access are suitable for transporting tools, hoses, long pipes, drilling pipes and goods to & from offshore oil rigs.			
Features	<input type="checkbox"/> DNV 2.7-1/BS 12079 certified appraised design by Bureau Veritas <input type="checkbox"/> Stackable design <input type="checkbox"/> Protected padeye <input type="checkbox"/> Certified ISO bottom corner <input type="checkbox"/> Drain hole	<input type="checkbox"/> Internal and external Tie points <input type="checkbox"/> Lifting Set (Optional) <input type="checkbox"/> Cargo net (Optional) <input type="checkbox"/> Supports for pipes (Optional) <input type="checkbox"/> Wooden pipe supports (Optional)		
Weight and Dimensions	Max. Gross weight (kg)	13,500	External Dimensions	12000 x 1200 x 1200
	Tare Weight (kg)	3,500	L x W x H (mm)	
	Max. Pay Load (kg)	10,000	Internal Dimensions	11700 x 900 x 1000
			L x W x H (mm)	

DNV 2.7-1/BS 12079 6x, 12x, 16x Bottle Rack



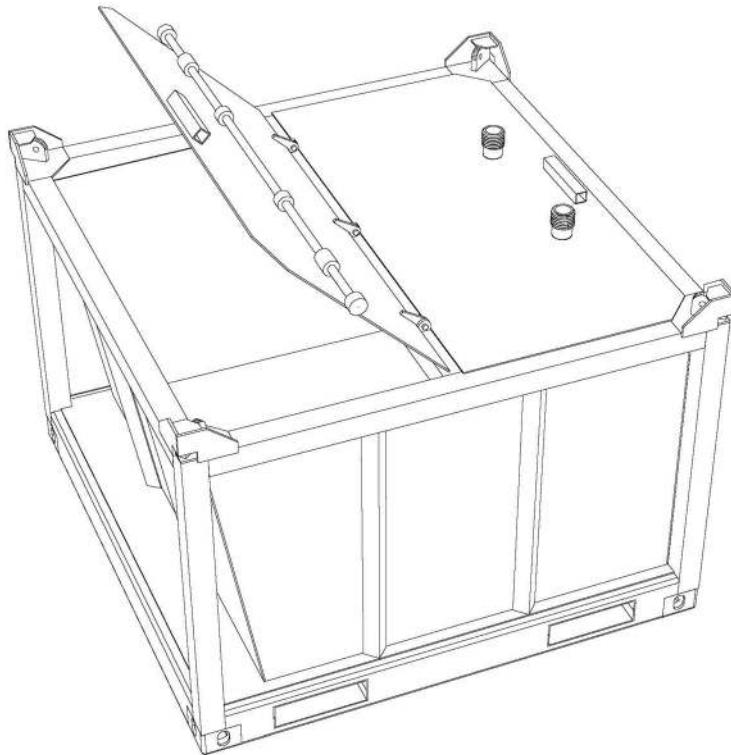
Product code: CP-08

Overview	Offshore bottle racks are suitable for transporting Oxygen, acetylene and nitrogen cylinders to & from offshore oil rigs.			
Features	<ul style="list-style-type: none"> <input type="checkbox"/> DNV 2.7-1/BS 12079 certified appraised design by Bureau Veritas <input type="checkbox"/> Variables sizes <input type="checkbox"/> Stackable design <input type="checkbox"/> Protected padeye <input type="checkbox"/> Secured doors by pins 	<ul style="list-style-type: none"> <input type="checkbox"/> Secured chains with lock pin <input type="checkbox"/> Side mesh for clear internal vision <input type="checkbox"/> Internal and external Tie points <input type="checkbox"/> Lifting Set (Optional) 		
Weight and Dimensions	Max. Gross weight (kg)	3,000	External Dimensions	1500 x 1200 x 2000
	Tare Weight (kg)	1,000	L x W x H (mm)	
	Max. Pay Load (kg)	2,000	Internal Dimensions	1300 x 1000 x 1700
			L x W x H (mm)	



**BUREAU
VERITAS**

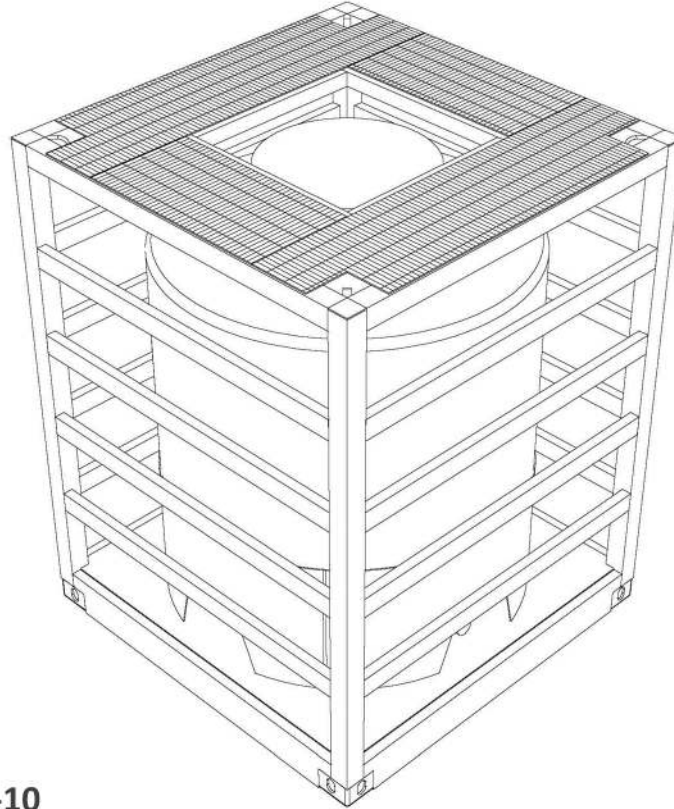
DNV 2.7-1/BS 12079 Mud Skip



Product code: CP-09

Overview	Offshore Mud skips are suitable for transporting mud or oil to & from offshore oil rigs.			
Features	<input type="checkbox"/> DNV 2.7-1/BS 12079 certified appraised design by Bureau Veritas <input type="checkbox"/> Variables sizes <input type="checkbox"/> Stackable design <input type="checkbox"/> Protected padeye <input type="checkbox"/> Secured sealed top door	<input type="checkbox"/> Protected hinges and lockers <input type="checkbox"/> 2 way forklift pocket <input type="checkbox"/> 2 Vacuum nozzles with aluminum plug secured by chain <input type="checkbox"/> Side padeyes to allow tilting <input type="checkbox"/> Lifting Set (Optional)		
Weight and Dimensions	Max. Gross weight (kg)	6,500	External Dimensions	2000 x 2000 x 1500
	Tare Weight (kg)	1,500	L x W x H (mm)	
	Max. Pay Load (kg)	5,000	Internal Dimensions	1800 x 1800 x 1300
			L x W x H (mm)	(4m ³)

DNV 2.7-1/BS 12079 Tote Tank



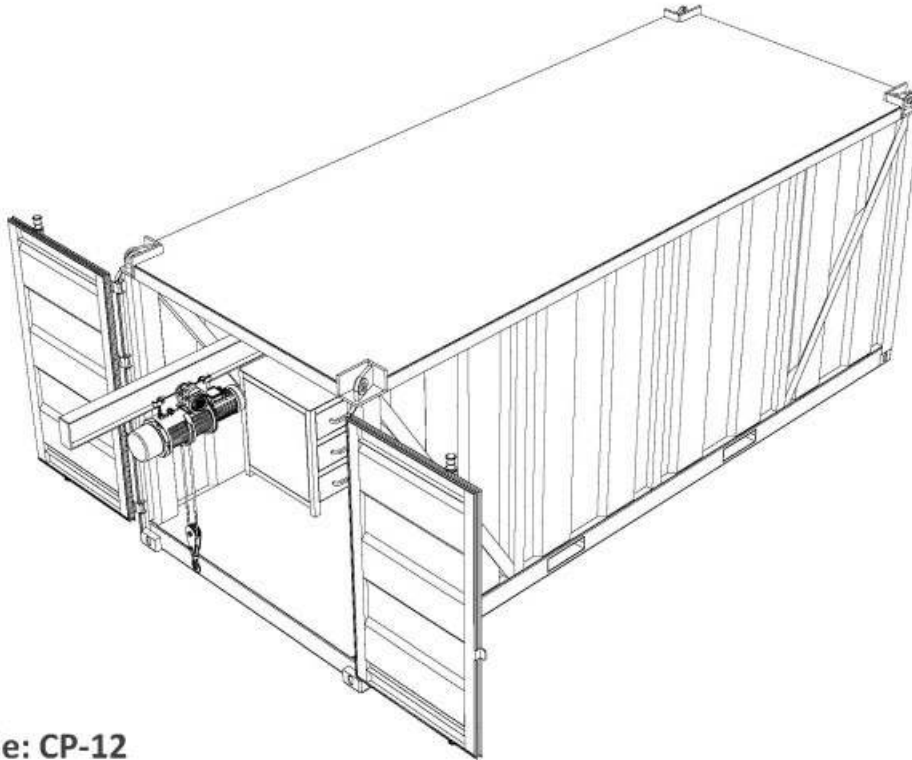
Product code: CP-10

Overview	Offshore Tote tank are suitable for transporting water, oil and low viscous fluids to & from offshore oil rigs.			
Features	<input type="checkbox"/> DNV 2.7-1/BS 12079 certified appraised design by Bureau Veritas <input type="checkbox"/> Variables sizes <input type="checkbox"/> Stackable design <input type="checkbox"/> Protected padeye <input type="checkbox"/> Bottom iso corners	<input type="checkbox"/> 2 way forklift pocket <input type="checkbox"/> Movable roof grating <input type="checkbox"/> 24" manhole <input type="checkbox"/> 2" inlet and outlet w/valves and plugs <input type="checkbox"/> Level indicator <input type="checkbox"/> Lifting Set (Optional)		
Weight and Dimensions	Max. Gross weight (kg)	10,000	External Dimensions	1950 x 1950 x 2600
	Tare Weight (kg)	2,400	L x W x H (mm)	
	Max. Pay Load (kg)	7,600	Internal Dimensions	1800 x 1800 x 2300
			L x W x H (mm)	(4000 Liter)



**BUREAU
VERITAS**

DNV 2.7-1/BS 12079 20ft Workshop Container



Product code: CP-12

Overview	Offshore Closed workshop containers are designed to provide facilities for personnel to maintain Remotely Operated Vehicles (ROVs) and storage facilities at offshore oil rigs.			
Features	<ul style="list-style-type: none"> <input type="checkbox"/> DNV 2.7-1/BS 12079 certified appraised design by Bureau Veritas <input type="checkbox"/> Stackable design <input type="checkbox"/> Protected padeye <input type="checkbox"/> Certified ISO bottom corner <input type="checkbox"/> Drain hole <input type="checkbox"/> Side ladder 	<ul style="list-style-type: none"> <input type="checkbox"/> Protected hinges and locks <input type="checkbox"/> Sealed water proof door <input type="checkbox"/> Internal and external Tie points <input type="checkbox"/> Crane 1 ton <input type="checkbox"/> Shelving units <input type="checkbox"/> Lifting Set (Optional) <input type="checkbox"/> Lighting, electric work, AC's and escape door 		
Weight and Dimensions	Max. Gross weight (kg)	10,000	External Dimensions	6000 x 2400 x 2600
	Tare Weight (kg)	5,500	L x W x H (mm)	
	Max. Pay Load (kg)	4,500	Internal Dimensions	5700 x 2100 x 2300
			L x W x H (mm)	



**BUREAU
VERITAS**



Head Office:

3082 Abu Elwafa Street, Al-Meiraj City,
El Basateen - Cairo, Egypt.

Yard:

El Katameya, Third New Cairo - Cairo, Egypt

Phone : +20 2 2447 3121
+20 2 2447 3122

Fax : +20 2 2447 3056

website : www.egycamp.com

